

LUNCH 
& LEARN

Summary Notes for October 10, 2024



Hello Amazing Georgia IB Coordinators!

Here are the Summary Notes and resources links from our October GA IB Coordinators Lunch & Learn. Our theme for 2024-2025 is IB Dreams to Action.

(Click on the links and images throughout the notes to access more information.)

Thank you to everyone who was able to join in our Lunch & Learn and contribute to wonderful, collaborative thinking using this provocation, **How can we create a culture of belonging by exploring identities and relationships?**

**Belonging is the Lens for our Theme's Explorations:
(Programme Standards & Practices Environment 02)**

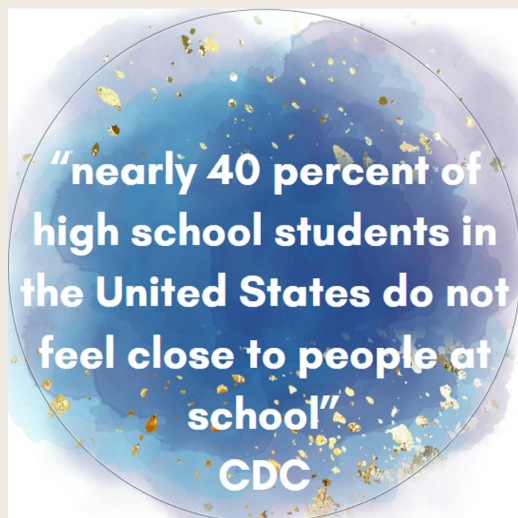
1 **What?> What elements of the learning environment in IB World Schools support student success?** We reflected on the Student Support practices under Programme Standard Environment 02 that communicates that IB World Schools "foster the social, emotional, and physical well-being of its students and teachers" by "promoting open communication based on understanding and respect."

Recent statistics found in an article, [**What Gets in the Way of Students Feeling a Sense of Belonging at School**](#) in Education Week, July 2024 states that 40% of high school students in the US do not feel connected to people at school. This alarming number is one indicator that we thought about as being a

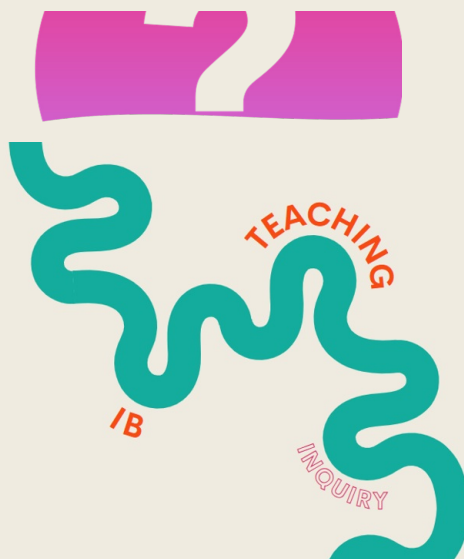


We looked again at a Stanford researcher, Geoffrey Cohen's definition of belonging- "Belonging is the feeling that we're part of a larger group that values, respects, and cares for us..." as we thought about,

reason to focus on belonging in our schools.



How can we turn our IB Dream, Belonging, to Action? We explored this question by thinking about how we might use the global contexts of Identities and Relationships to create a culture of belonging because this MYP: and DP: From principles into practice statement explains, "*Teaching and learning in **global contexts** supports the IB's mission "to develop inquiring, knowledgeable and caring young people who help to create a better and more peaceful world through intercultural understanding and respect."*



2 So What?> Exploration of Belonging in the IB Learner Profile (IBLP) and Approaches to Teaching (ATT)- Inquiry:

We looked at Relationships & a Student-Led Inquiry Environment by thinking through two filters that asked, Does our unit 1) create opportunities to experience joy, wonder, confusion, curiosity in a supportive environment? and 2) offer students opportunities to collaborate with others in a process of 'sense-making'?

We considered various inquiry learners' work environments represented in the **Empowered Inquiry Spaces** sketchnote.

3 Now What?> Uncovering Identities to Build Belonging:

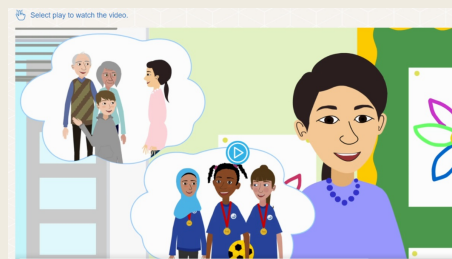
We used a PYP Nano PD, "Knowing our learners", that is Cross-programmes appropriate with minor adaptations, to discuss what such an activity looks like in our own school context.

The first activity in the nano PD that we utilized is **Exploring Students' Identities**. We worked together to look at the three sample students' "identity flowers" to think and discuss these two questions:

How would you use this knowledge to:

- connect students through their commonalities?
- develop an appreciation of diversity through recognition and valuing of differences?
-

We concluded with a quick **I used to think, Now I think Project Zero Thinking Routine** around our focus on





4 Collaborating with our Programme Coordinators Breakout:

PYP Professional Inquiry: IB Exchange
MYP Professional Inquiry: MYP Projects-Community and Personal Project Discussions

DP/CP Professional Inquiry: Capturing data and Providing Opportunities for Programme Support

Admin Professional: IB from the Administrators Lens
 For questions or requests, email jill.sims@casieonline.org.



More Resources That We Shared and Viewed:

Below are additional resources we can use in our exploration of Belonging:

Empowered Inquiry Spaces
 @trev.mackenzie @nbathursthunt

	Cave The cave is a private space where an individual can think, reflect and transform learning from external knowledge to internal understandings. <i>A place for independent work and reflection.</i>
	Watering Hole The watering hole is an informal place where peers can share information and discoveries, acting as both learner and teacher simultaneously. <i>A place for collaborative group time.</i>
	Campfire The campfire is a space where people gather to learn from an expert. The experts are not only teachers but also students who are empowered to share. <i>A place for large group gathering and sharing.</i>
	Life Life is a space designed to support the application of knowledge and is an essential component of the learning process. We learn something and put it to use. <i>A place for knowledge application.</i>

Inspired by: David Thorpe #InquiryMindset



[Empowered Inquiry Spaces Sketchnote CASIE Blog- Embracing Inquiry](#)

You are invited to join CASIE's social media family by clicking the links on the right. Also, remember that we have a **resources toolkit** on our website, designed to provide you additional support.





We hope that you can join us for the
GA IB Coordinators Lunch & Learn
series during the 2024-2025 school
year!

We have opportunities for you to
learn, network, and problem-solve with your IB colleagues from across
Georgia.

2024-2025 School Year Meeting Dates

IBGA Roundtable on November 8, 2024

December 12, 2024

January 16, 2025

February 13, 2025

March 13, 2025

April 17, 2025

We have updated the Lunch and Learn registration process. This single RSVP link
allows you to register for all L&L events you plan to attend.

[RSVP to future Lunch & Learns
HERE](#)

Enhance your Staff's IB Professional
Development at CASIE's Workshops!



IB Workshops

2025 IB Workshop Dates:

February 7-9, 2025 - Virtual

March 14-16, 2025 - Virtual

June 10-12, 2025 - In-person

July 8-10, 2025 - Virtual

October 17-18, 2025 - Virtual

[More Information](#)



[Contact Us Today](#)

Center for the Advancement and Study of International Education (CASIE) | 2635 Century
Parkway Suite 125 | Atlanta, GA 30345 US

[Unsubscribe](#) | [Update Profile](#) | [Constant Contact Data Notice](#)



Try email marketing for free today!