



Summary Notes for September 11, 2024



Hello Amazing IB Coordinators!

Here are the Summary Notes and resources links from our September IB Coordinators Chat. Our theme for 2024-2025 is IB Dreams to Action.

(Click on the links and images throughout the notes to access more information.)

Thank you to everyone who was able to join in our IB Coordinators Chat and contribute to wonderful, collaborative thinking using this provocation, **How will we develop inquiring, knowledgeable and caring young people who help to create a better and more peaceful world through intercultural understanding and respect?**

Belonging is the Lens for our Theme's Explorations Programme Standards & Practices (PSP) 0101

1 What?> What PL would further IB Programme Development in Your School's Context? We explored the possibility of planning professional learning to build capacity to deliver an IB programme that supports our IB Dreams coming to life and also to meet IB requirements. The PSP that could be used in a PDP is Standard: Teacher support (0203) Learning environments in IB World Schools support and empower teachers.

Purpose	Environment	Culture	Learning
Embodiment of the IB learner profile	Professional learning in IB programmes	Policy into practice	Planning and designing the curriculum
Pedagogical Leadership	Empowering & Supporting the IB Coordinator	Inclusion in the IB Programme(s)	Approaches to learning
Compassionate community engagement/action	Learning environment design	Student support for all to reach their full potential	Approaches to teaching
Compassionate Lifelong learners	Scheduling for IB programme delivery	Academic integrity & ethical practices	Intercultural understanding
Student Agency	Collaborative planning and teaching	Multilingualism	Collaboration in the IB community
Fostering international-mindedness	Well-being in school community	Culture of continuous learning & growth	Learning, teaching and assessment

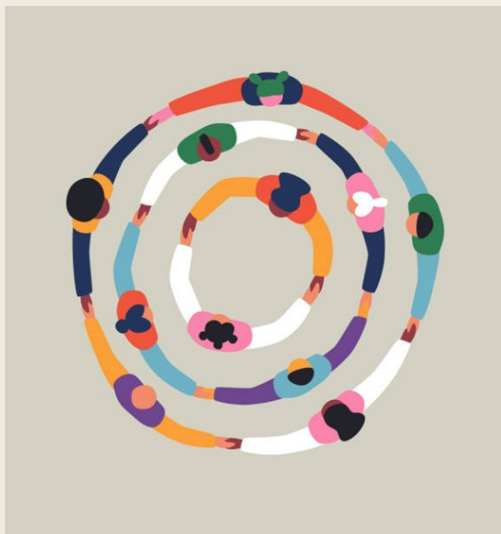
How can we turn our IB Dreams to Action?



The IB practices that could be used in a Professional Learning PDP are:

Teacher support 2: The school ensures that leadership and teachers participate in appropriate and timely professional learning to inform their practice. (0203-02) and

Teacher support 2.1: The school complies with IB-mandated professional development requirements, as outlined in IB documentation. (0203-02-0100)



2 So What?> Exploration of Belonging

Definitions in the IBLP, ATLs, DEI & Research: We looked at the IB Learner Profile definitions that aligned with a researcher's **definition for belonging**, "*Belonging is the feeling that we're part of a larger group that values, respects, and cares for us—and to which we feel we have something to contribute.*" (Geoffrey Cohen 2022). Balanced, Risk-takers, Inquirers, Caring, Communicators, Principled, Open-minded, and Thinkers all aligned directly in addition to ATL Social and Communication Skills.

IB's DEI Statement designates IB dreams to action in this way, "...create a better and more peaceful world through education that builds intercultural understanding and respect...". The research states that, "*a strong sense of belonging increases academic performance, positive mental health and well-being while it decreases suicidal ideation.*" (Boyd et al., 2023) -from **ASCD article, "What Does It Mean to Belong?"**



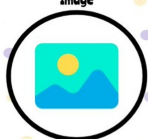
3 Now What?> Leading the IB

Dream of Belonging: We began our thinking about how to lead actualizing the IB Dreams that IB World Schools have by using a lens of belonging and taking these possible next steps in our school community:

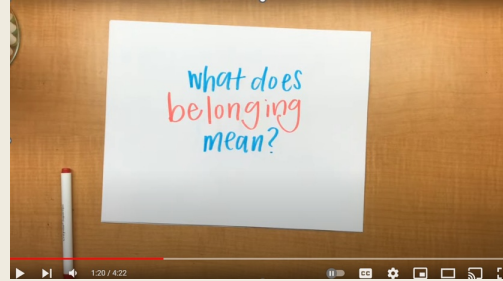
- Define belonging using a See, Think, Wonder routine and the **What does belonging mean? video**.
- Present the benefits of creating a strong sense of belonging in the

Color Symbol Image

As you are reading, listening, or watching, make note of things that you find interesting or insightful. Then choose the color, symbol and image that best represents the key idea and explain your thinking.

Color	Symbol	Image
		
Explain:	Explain:	Explain:

- school using research, articles, etc.
- Leading explorations using the **Color, Symbol, Image thinking routine** to help everyone visualize belonging and connect what we know to what feelings come from that knowledge.
- Connect creating belonging to the IBLP, ATL skills and SEL work.
- Connect also to multilingualism.



4 Collaborating with our Programme Coordinators Breakout:

PYP Professional Inquiry: Reviewing the POI Process

MYP Professional Inquiry: Enhanced MYP notes from the IB Global Conference

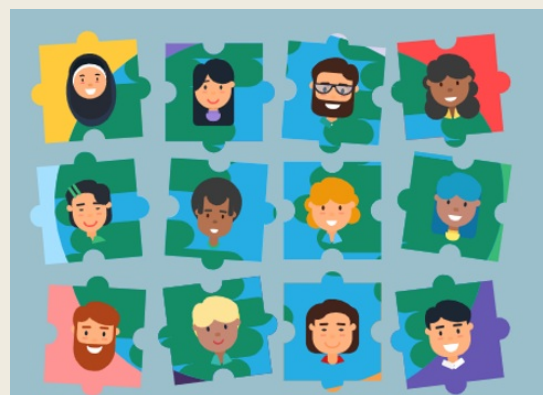
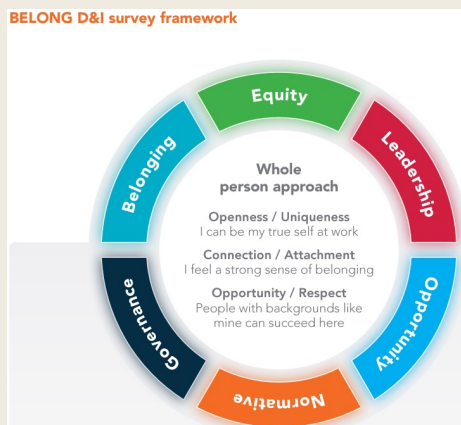
DP/CP Professional Inquiry: Collaborative Planning for Teaching and Learning Programme Development

Admin Professional: IB from the Administrators Lens
For questions or requests, email jill.sims@casieonline.org.



More Resources That We Shared and Viewed:

Below are additional resources we can use in our exploration of Belonging:



[People Insight Belong White Paper](#) [Multilingualism support with Meg](#)

You are invited to join CASIE's social media family by clicking the links on the right. Also, remember that we have a **resources toolkit** on our website, designed to provide you additional support.



We hope that you can join us

The logo for CASIE ib Coordinators CHAT is contained within a teal speech bubble. The word "casie" is in orange lowercase letters, "ib" is in black lowercase letters, "Coordinators" is in large black uppercase letters, and "CHAT" is in smaller black uppercase letters below it.

**casie ib
Coordinators
C H A T**

**for the IB Coordinators Chat
series during the 2024-2025
Schoolyear!**

**We will have opportunities
for you to learn, network, and
problem-solve with your IB
colleagues from across the
Americas and the World.**

[RSVP HERE](#)

**2024-2025 School Year
Meeting Dates**

**October 9, 2024
November 13, 2024
December 11, 2024
January 15, 2025
February 12, 2025
March 12, 2025
April 16, 2025**

[RSVP to future IB Coordinators Chats HERE](#)

**Enhance your Staff's IB Professional
Development at CASIE's Workshops!**

UPCOMING IB Workshops

- October 25-27, 2024 – **Virtual** – [Register](#)
- February 7-9, 2025 – **Virtual** – [Register](#)
- March 14-16, 2025 – **Virtual** – [Register](#)
- June 10-12, 2025- **In-person** – [Register](#)
- July 8-10, 2025 – **Virtual**

More Information



Scan this QR code or visit this [LINK](#)

IB Coordinators Chat Impact Stories

We started our monthly IB Coordinators Chats so that you have a place to share ideas and concerns, learn from other coordinators, discover new resources, and establish valuable contacts.

We want to hear from you. How have IB Coordinators Chats impacted you? How has it helped you? What do you like most about it?

Would you please record a short 30-60 second video for us? We might even use in ion our website or social media!



Contact Us Today

Center for the Advancement and Study of International Education (CASIE) | 2635 Century Parkway Suite 125 | Atlanta, GA 30345 US

[Unsubscribe](#) | [Update Profile](#) | [Constant Contact Data Notice](#)



Try email marketing for free today!