

# LUNCH & LEARN

## Summary Notes for September 12, 2024



**Hello Amazing Georgia IB Coordinators!**

**Here are the Summary Notes and resources links from our September IB Coordinators Lunch & Learn. Our theme for 2024-2025 is IB Dreams to Action.**

*(Click on the links and images throughout the notes to access more information.)*

Thank you to everyone who was able to join in our Lunch & Learn and contribute to wonderful, collaborative thinking using this provocation, **How will we develop inquiring, knowledgeable and caring young people who help to create a better and more peaceful world through intercultural understanding and respect?**

### **Belonging is the Lens for our Theme's Explorations (Programme Standards & Practices 0101)**

#### **1 What?> What PL would further IB**

**Programme Development in Your School's Context?** We explored the possibility of planning professional learning to build capacity to deliver an IB programme that supports our IB Dreams coming to life and also to meet IB requirements. The PSP that could be used in a PDP is Standard: Teacher support (0203) Learning environments in IB World Schools support and empower teachers.

Purpose	Environment	Culture	Learning
Embodiment of the IB learner profile	Professional learning in IB programmes	Policy into practice	Planning and designing the curriculum
Pedagogical Leadership	Empowering & Supporting the IB Coordinator	Inclusion in the IB Programme(s)	Approaches to learning
Compassionate community engagement/action	Learning environment design	Student support for all to reach their full potential	Approaches to teaching
Compassionate Lifelong learners	Scheduling for IB programme delivery	Academic integrity & ethical practices	Intercultural understanding
Student Agency	Collaborative planning and teaching	Multilingualism	Collaboration in the IB community
Fostering international-mindedness	Well-being in school community	Culture of continuous learning & growth	Learning, teaching and assessment

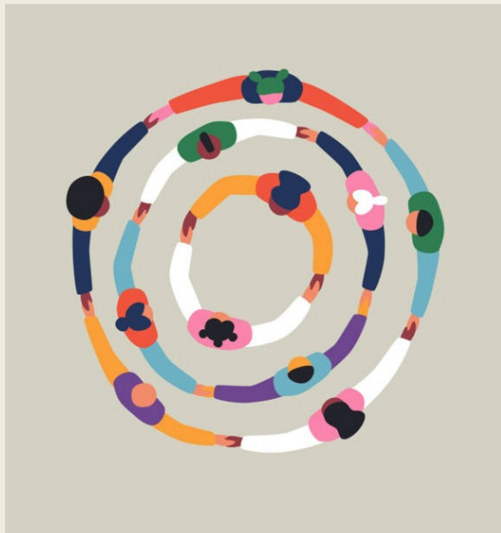
#### **How can we turn our IB Dreams to Action?**

The IB practices that could be used in a Professional Learning PDP are:

**Teacher support 2:** The school ensures that leadership and



teachers participate in appropriate and timely professional learning to inform their practice. (0203-02) and **Teacher support 2.1:** The school complies with IB-mandated professional development requirements, as outlined in IB documentation. (0203-02-0100)



## 2 So What?> Exploration of Belonging

**Definitions in the IBLP, ATLs, DEI & Research:** We looked at the IB Learner Profile definitions that aligned with a researcher's **definition for belonging**, "*Belonging is the feeling that we're part of a larger group that values, respects, and cares for us—and to which we feel we have something to contribute.*" (Geoffrey Cohen 2022). Balanced, Risk-takers, Inquirers, Caring, Communicators, Principled, Open-minded, and Thinkers all aligned directly in addition to ATL Social and Communication Skills.

**IB's DEI Statement** designates IB dreams to action in this way, "...create a better and more peaceful world through education that builds intercultural understanding and respect...". The research states that, "*a strong sense of belonging increases academic performance, positive mental health and well-being while it decreases suicidal ideation.*" (Boyd et al., 2023) -from **ASCD article, "What Does It Mean to Belong?"**




## 3 Now What?> Leading the IB

**Dream of Belonging:** We began our thinking about how to lead actualizing the IB Dreams that IB World Schools have by using a lens of belonging and taking these possible next steps in our school community:

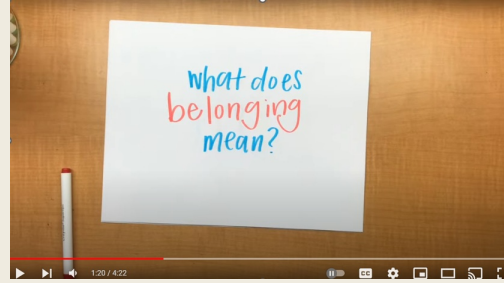
- Define belonging using a See, Think, Wonder routine and the **What does belonging mean? video**.
- Present the benefits of creating a strong sense of belonging in the school using research, articles, etc.
- Leading explorations using the **Color, Symbol, Image thinking routine** to help everyone visualize belonging and connect what we know to what feelings come from that

**Color Symbol Image**

As you are reading, listening or watching make note of things that you find interesting or insightful. Then choose the color, symbol and image that best represents the key idea and explain your thinking.

Color	Symbol	Image
		
Explain:	Explain:	Explain:

- knowledge.
- Connect creating belonging to the IBLP, ATL skills and SEL work.
- Connect also to multilingualism.



## 4 Collaborating with our Programme Coordinators Breakout:

**PYP Professional Inquiry:** Reviewing the POI Process

**MYP Professional Inquiry:** Enhanced MYP notes from the IB Global Conference

**DP/CP Professional Inquiry:** Collaborative Planning for Teaching and Learning Programme Development

**Admin Professional:** IB from the Administrators Lens

For questions or requests, email [jill.sims@casieonline.org](mailto:jill.sims@casieonline.org).



## More Resources That We Shared and Viewed:

Below are additional resources we can use in our exploration of Belonging:

**BELONG D&I survey framework**



**[People Insight Belong White Paper](#) [Multilingualism support with Meg](#)**

You are invited to join CASIE's social media family by clicking the links on the right. Also, remember that we have a **resources toolkit** on our website, designed to provide you additional support.



# LUNCH & LEARN



**We hope that you can join us for the GA IB Coordinators Lunch & Learn series during the 2024-2025 Schoolyear!**

**We will have opportunities for you to learn, network, and problem-solve with your IB colleagues from across Georgia.**

We have updated the Lunch and Learn registration process. This single RSVP link allows you to register for all L&L events you plan to attend.

**[RSVP HERE](#)**

## **2024-2025 School Year Meeting Dates**

**October 10, 2024**

**November 14, 2024**

**December 12, 2024**

**January 16, 2025**

**February 13, 2025**

**March 13, 2025**

**April 17, 2025**

**RSVP to future Lunch & Learns  
HERE**

**Enhance your Staff's IB Professional  
Development at CASIE's Workshops!**

# UPCOMING IB Workshops

- October 25-27, 2024 – **Virtual** – [Register](#)
- February 7-9, 2025 – **Virtual** – [Register](#)
- March 14-16, 2025 – **Virtual** – [Register](#)
- June 10-12, 2025- **In-person** – [Register](#)
- July 8-10, 2025 – **Virtual**

## More Information



Scan this QR code or visit  
<http://casie.memfox.io/galn1>

### GA IB Coordinators Lunch & Learn Impact Stories

We started our monthly Lunch & Learns so that you have a place to share ideas and concerns, learn from veteran coordinators, discover new resources, and establish valuable contacts. We want to hear from you. How has Lunch & Learn impacted you? How has it helped you? What do you like most about it?

Would you please record a short 30-60 second video for us? We might even use in on our website or social media!



Contact Us Today

Center for the Advancement and Study of International Education (CASIE) | 2635 Century Parkway Suite 125 | Atlanta, GA 30345 US

[Unsubscribe](#) | [Update Profile](#) | [Constant Contact Data Notice](#)



Try email marketing for free today!